

**Welcome to worship, where awe draws us together and opens us to deeper connection. In God's presence, we are invited to let go of competition and live into true community.**

This worship service can be watched live on YouTube, as it happens, anywhere you have an internet connection. Additionally, past services will be archived so you can stay up-to-date or relive your favorite Sunday morning moments. You can find the link on our website or check it out at <https://bit.ly/FPClive>

Worship Assistant: Terry Eck  
Ushers: Pam Melchior  
Deacon Greeter: Pam Mongi  
Nursery:

Audio: Beth Folio  
Video: Mark Ingram  
Fellowship: Ginnie Tietjens

**NOTE: Sheet music for the hymns can be found on the next page or pages.**

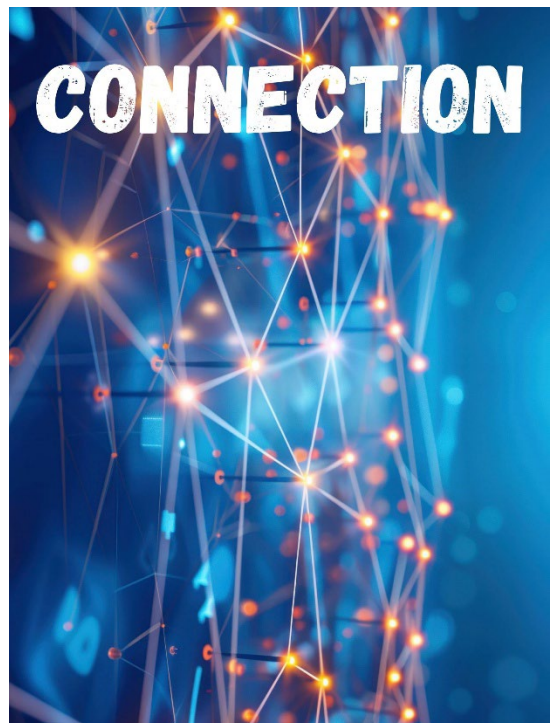


***Order of Worship***  
***February 8, 2026***

***Faith Presbyterian Church of Emmaus***

3002 N. Second Street, PO Box 507  
Emmaus, Pennsylvania 18049  
610.967.5600

[office@faithchurchemmaus.org](mailto:office@faithchurchemmaus.org)  
[www.faithchurchemmaus.org](http://www.faithchurchemmaus.org)



**Did You Know?**

You can support the mission and ministry of our church by donating online at <https://bit.ly/39QO3dQ>. You can scan this QR code, which will take you directly to the donate page on our website. We deeply appreciate your generosity and are so thankful for each of you!

**THE ORDER OF MORNING WORSHIP  
4<sup>TH</sup> SUNDAY IN ORDINARY TIME**

**10:00 AM**

**FEBRUARY 8, 2026**



THE FIRST NOTE OF THE PRELUDE begins our worship.

Please use the prelude time to turn your attention to God's presence and help. Nurturing our relationships and friendships in fellowship is essential to our life as a congregation, so please continue to do so following our time of worship.

*\* Those who are able are invited to stand.*

**FOCUSING UPON GOD'S PRESENCE AND VOICE**

WELCOME AND ANNOUNCEMENTS

PRELUDE

*"This Is My Father's World"*

\*CALL TO WORSHIP

One: By itself, one grain of salt cannot season a whole dish. Alone, one grain of salt - even the saltiest salt - can get lost. When we come together for worship, we are coming as an assortment of seasonings. Together, the body of Christ can bring a lot of flavor.

**All: Worship helps us deepen our connections to God, our connections to each other, and our connections to our communities.**

One: Community helps us grow. Our faith community helps us grow in ways that can deepen our faith and sustain our journeys.

**All: May we experience collective awe today as we worship together.**

\*OPENING PRAYER

## Here in This Place

401

## Gather Us In



1 Here in this place the new light is stream-ing; now is the dark-ness  
 2 We are the young, our lives are a mys-tery. We are the old who  
 3 Here we will take the wine and the wa - ter; here we will take the  
 4 Not in the dark of build-ings con - fin - ing, not in some heav - en,



van - ished a - way; see in this space our fears and our dream-ings  
 yearn for your face. We have been sung through-out all of his - tory,  
 bread of new birth. Here you shall call your sons and your daugh - ters,  
 light years a - way: here in this place the new light is shin - ing;



brought here to you in the light of this day.  
 called to be light to the whole hu - man race.  
 call us a - new to be salt for the earth.  
 now is the king - dom, and now is the day.



Gath - er us in, the lost and for - sak - en; gath - er us in, the  
 Gath - er us in, the rich and the haugh - ty; gath - er us in, the  
 Give us to drink the wine of com - pas - sion; give us to eat the  
 Gath - er us in and hold us for - ev - er; gath - er us in and



blind and the lame; call to us now, and we shall a - wak - en;  
 proud and the strong; give us a heart, so meek and so low - ly;  
 bread that is you; nour - ish us well, and teach us to fash - ion  
 make us your own; gath - er us in, all peo - ples to - geth - er,



we shall a - rise at the sound of our name.  
 give us the cour - age to en - ter the song.  
 lives that are ho - ly and hearts that are true.  
 fire of love in our flesh and our bone.

The "you/your" mentioned in every stanza is never identified, but this 1979 hymn is clearly a corporate prayer to God on behalf of the diverse congregation who have assembled for worship, longing to be transformed and used as God's witnesses and for God's purposes.

## LITANY OF AFFIRMATION

One: Jesus tells us that we are meant to be salt and light—present, engaged, and connected to the world around us. And yet, there are times when we withdraw, dim our light, or lose our willingness to stay connected when it feels costly or uncomfortable. Trusting in God’s grace, let us come before God with honesty, confessing the ways we have pulled back from relationship, from justice, and from love, knowing that God meets us not with condemnation but with mercy.

**All: Connecting God, you call us to lives that are intertwined—with you, with one another, and with the world you so deeply love. Yet we confess that we often choose distance over engagement, safety over solidarity, and silence over witness. We lose our savor when we hold back our compassion, and we hide our light when connection feels risky. Forgive us when fear or fatigue keeps us from living fully into who you call us to be. Restore us to lives of faithful presence, that our words and actions might reflect your love and draw others into the warmth of your grace.**

One: Lord in your mercy,

**All: hear our prayers.**

*(A moment is given for silent confession to God.)*

## ASSURANCE OF FORGIVENESS

### \*SHARING THE PEACE

One: Since God has forgiven us, let us also forgive one another.

The peace of our Lord Jesus Christ be with you all.

**All: And also with you.**

One: Let us share our forgiven joy with one another.

\*HYMN OF ASSURANCE #581     *“Gloria Patri”*

*THE WORD OF GOD TO THE CHURCH*

PRAYER FOR ILLUMINATION

FIRST SCRIPTURE LESSON

PSALM 149

Praise the Lord!

Sing to the Lord a new song,

his praise in the assembly of the faithful.

<sup>2</sup> Let Israel be glad in its Maker;

let the children of Zion rejoice in their King.

<sup>3</sup> Let them praise his name with dancing,

making melody to him with tambourine and lyre.

<sup>4</sup> For the Lord takes pleasure in his people;

he adorns the humble with victory.

<sup>5</sup> Let the faithful exult in glory;

let them sing for joy on their couches.

<sup>6</sup> Let the high praises of God be in their throats

and two-edged swords in their hands,

<sup>7</sup> to execute vengeance on the nations

and punishment on the peoples,

<sup>8</sup> to bind their kings with fetters

and their nobles with chains of iron,

<sup>9</sup> to execute on them the judgment decreed.

This is glory for all his faithful ones.

Praise the Lord!



## This Is My Father's World 370

1 This is my Fa-ther's world, and to my lis - tening ears all  
2 This is my Fa-ther's world. O, let me ne'er for - get that

na - ture sings, and round me rings the mu - sic of the spheres.  
though the wrong seems oft so strong, God is the rul - er yet.

This is my Fa-ther's world; I rest me in the thought of  
This is my Fa-ther's world. The bat - tle is not done: Je -

rocks and trees, of skies and seas, his hand the won - ders wrought.  
sus who died shall be sat - is - fied, and earth and heaven be one.

When pastor of a Presbyterian church in Lockport, New York, the author of this text referred to his morning walks as "going out to see my Father's world." The tune created for these words is based on an English melody the composer learned from his mother when he was a boy.

SHARING JOYS & CONCERNS  
INTERCESSIONS AND PETITIONS  
THE LORD'S PRAYER

Glory to God Hymnal - Pg. 35  
(Please use "debts & debtors".)

**OUR RESPONSE TO GOD'S WORD**

CALL FOR OFFERTORY

OFFERTORY

*"Siyahamba"*  
(We are Marching in the Light of God)

\*SONG OF RESPONSE #606

*"Doxology"*

\*PRAYER OF DEDICATION

\*HYMN #761 *"Called As Partners in Christ's Service"*  
*Sheet music on next page.*

\*CHARGE & BENEDICTION

POSTLUDE *"The Lord Bless You and Keep You"*

*Please feel free to sit and reflect during the postlude or depart and join us in Fellowship Hall.*



Prelude arr. Daniel Burton, OneLicense.net

Hymn #401 Glory to God Hymnal, OneLicense.net

Hymn #370 Glory to God Hymnal, Public Domain

Offertory arr. Henry H. Leck. OneLicense.net

Hymn #761 Glory to God Hymnal, CCLI

Postlude Peter Lutkin, Public Domain

# Called as Partners in Christ's Service 761

1 Called as part-ners in Christ's ser-vice, called to min-is-tries of grace,  
 2 Christ's ex-am-ple, Christ's in-spir-ing, Christ's clear call to work and worth,  
 3 Thus new pat-tens for Christ's mis-sion, in a small or glob-al sense,  
 4 So God grant us for to - mor-row ways to or-der hu - man life

we re-pond with deep com-mit-ment fresh new lines of faith to trace.  
 let us fol-low, nev-er fal-tering, rec-on-cil-ing folk on earth.  
 help us bear each oth-er's bur-dens, break-ing down each wall or fence.  
 that sur-round each per-son's sor-row with a calm that con-quests strife.

May we learn the art of shar-ing, side by side and friend with friend,  
 Men and wom-en, rich-er, poor-er, all God's peo-ple, young and old,  
 Words of com-fort, words of vi-sion, words of chal-lenge, said with care,  
 Make us part-ners in our liv-ing, our com-pas-sion to in-crease,

e - qual part-ners in our car-ing to ful-fill God's cho-sen end.  
 blend-ing hu-man skills to-geth-er gra-cious gifts from God un-fold.  
 bring new power and strength for ac-tion, make us col-leagues, free and fair.  
 mes-sen-gers of faith, thus giv-ing hope and con-fi-dence and peace.

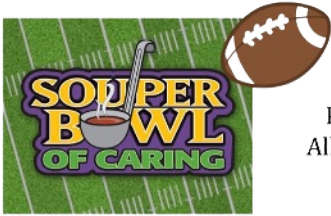
This hymn is a celebration of mutuality and diversity as well as a challenge to the Christian community to live out a ministry of reconciliation and inclusion. This 20th-century text is set to a 19th-century tune named for the noted pastor and preacher Henry Ward Beecher.



# Faith Life

February 8, 2026

We warmly invite you to linger after worship and share in a time of fellowship. It's a wonderful opportunity to connect, catch up, and build community—and we'll have refreshments and snacks waiting to make it even sweeter. We'd love for you to stay and join us!



## Sunday, February 8<sup>th</sup>

Please consider cash contributions. All giving will support the Rotary Food Program.

### Daybreak Meal—February 9

Faith Church prepares and serves a meal at Daybreak on the second Monday of each month, from 1:30–4:30 p.m. Can you help?

- **Bake & Drop Off:** Bring cookies or other treats to the church kitchen by noon on the Monday prior. Please label anything with nuts, and sugar-free items are always welcome!
- **Helpers Needed:** Especially cooks! Meet at the church at 1:30 p.m. to carpool.

We typically serve 80–100 people, and the clients truly enjoy the variety of home-baked treats you provide. Thank you for sharing your time and talents!

If you can help, or for more details, speak with Carolyn Baittinger or Zona Farmer.

### Mission Project for Daybreak

The Ministry to the Community Committee has been collecting supplies to create takeout bags for Daybreak clients who may lack food and shelter when they are not at the center. These bags will offer care and nourishment beyond regular mealtimes, and **we plan to pack them this morning during Sunday Morning Together**, to have them ready for Faith's Daybreak meal tomorrow. Thank you for helping us extend compassion to our community.



### Sights, Sounds, and Spuds

On Sunday, **February 15**, following worship, we will be holding a talent show, **SIGHTS, SOUNDS, and SPUDS**.

The Ministry to the Congregation will have a potato bar (spuds) for your dining pleasure before heading to the sanctuary for the talent (sounds) portion of the day.

If your talents are more visual than musical, there will be a space available to display them.

You may sign up on the whiteboard in the Narthex or see John Shilanskas or Tim Bagnull.

### Save the Date



Ash Wednesday is fast approaching on **February 18**. This year, we will gather for a worship service and soup meal at 6:30 p.m.,

with the meal thoughtfully incorporated into the service. If you are willing to prepare a pot of soup, please contact Sally Heimbach.

## *Spiritual Practices: A Lenten Journey*

*Join us after worship during Lent to explore different spiritual practices*



- ◆ February 22: Lectio/Visio Divina
- ◆ March 1: Praying with Color
- ◆ March 8: Labyrinths
- ◆ March 15: Examen
- ◆ March 22: Rule of Life

### Faith Presbyterian Church

3002 N. Second Street, PO Box 507 Emmaus, PA 18048  
610-967-5600 [office@faithchurchemmaus.org](mailto:office@faithchurchemmaus.org)  
[www.faithchurchemmaus.org](http://www.faithchurchemmaus.org)

### Church Office Hours

Monday-Thursday from 9:00 a.m. to Noon  
Closed Fridays



### **The Nursery Needs You!**



Our youngest members are a treasured part of our church family—and we need caring volunteers to help care for them during worship. If you don't yet have your clearances, don't worry—we'll guide you through the process!

- **February**

☛ Sign up today by adding your name to the whiteboard in the narthex or by contacting Sally Heimbach. Your presence makes a difference!

### **Fellowship Hosts Needed**



Fellowship time after worship is one of the best ways we grow together as a church family. Hosting is simple—clear instructions are provided—and your warm hospitality blesses everyone who gathers!

- **February 22**

☛ Sign up on the whiteboard in the narthex or contact Sally Heimbach to bless our church family with your hospitality.

### **Ushers/Greeters Needed**



A warm welcome makes Sunday worship extra special. Our ushers help everything run smoothly by greeting worshipers, sharing materials, and offering a friendly smile. It's easy to do—and we provide all the reminders and instructions you need!

Thank you to all who have volunteered to usher.

#### **Check the sign-up sheet.**

☛ Sign up on the table in the narthex or speak with Anne Laubach for more details. Your welcome matters!

### **Worship Assistants Needed**



Helping during worship is simple, rewarding, and so important! Everything is prepared for you ahead of time—we provide clear, step-by-step instructions and all the materials you'll need.

- **February 15**

☛ Be part of creating a meaningful worship experience. Sign up on the whiteboard in the narthex or reach out to Sally Heimbach.



**February 15** - "Paying It Forward"  
Matthew 17:1-9

**February 18** - Ash Wednesday  
Soup Supper

**February 22** - "So Good It Catches Us by Surprise"  
John 2:1-11



**TODAY**—Fill Daybreak snack bags, Fellowship, Children's music

**Feb. 15**—Talent Show, Fellowship

**Feb. 22**—Lenten Bible Study, Fellowship, Children's Music

**Mar. 1**—Potluck (Ministry of Support), Lenten Bible Study

**Mar. 8**—Lenten Bible Study, Fellowship, Children's Music

**Mar. 15**—Lenten Bible Study, Fellowship

**Mar. 22**—Lenten Bible Study, Fellowship

**Mar. 29**—Easter Egg Hunt, Fellowship



### **St. Matthew's Clothes Closet**

St. Matthew's Clothes Closet at 5th and Ridge in Emmaus is open year-round. All donations can be placed in the wooden collection box beside the office door. They continue to accept men's, women's and children's SEASONAL clothing, shoes, linens and small toys. Twice a month the donations are delivered to St. Matthew's.

For anyone not familiar with this program, they welcome the entire community to shop from 10:00am to 1:00pm on the 1st and 3rd Saturdays of each month. There is no charge but they do take cash donations. There is a small parking lot at the back of the church. Enter through the door closest to the alley and take the elevator to the 2nd floor.

You will find everything is nicely arranged by appropriate categories.



Thank you all for the many donations!



The Conference of Churches is hosting its 5th Annual Toilet Paper initiative this February. Toilet paper is a basic necessity that many people struggle to afford or cannot easily access. Thanks to the generous support of the wider community, they have the opportunity to provide essential help to individuals and families in desperate need.

They are collecting toilet paper in all forms! While donations are not being collected here at church, you can still help by purchasing items from their Amazon Wishlist at <https://bit.ly/3NFsxwh>.



# the Gospel of John

## Word on Wednesday Bible Study

Join us Wednesdays at noon in the church parlor. All are welcome!  
*WOW will not meet April 1 or 8. Our last WOW before summer break will be May 27.*

### Presbyterian Disaster Assistance

Scan this QR code to donate to aid disaster relief, or send a check with PDA in the memo line, mail to:

Presbyterian Disaster c/o  
 Presbyterian Church (U.S.A.)  
 P.O. Box 643700  
 Pittsburgh, PA 15264-3700



There are several specific disasters on the PDA website. You can give directly to any one of them, or let PDA determine where best to use your donation.



### Conversations

Conversations is a gathering of women that meets on the second Thursday of the month, and all are welcome!

Conversations will meet at Art Beat at 10AM on 2/13 to discuss how loving your neighbor looks with interfaith relationships & those who are different from you.

If you have any questions, please speak with Anne Laubach or Donna Call. Thank you!



### Teachers' Closet

Faith Church's Teachers' Closet offers local educators a free and welcoming place to gather the classroom supplies they need—items they would often otherwise purchase out of their own pockets. Our local teachers, especially those working in elementary and middle schools, have expressed deep gratitude for this support.

- The Teachers' Closet is open on the **1<sup>st</sup> Saturday from 10-11:30 am** and the **3<sup>rd</sup> Wednesday from 3:30-5:00 pm**.
- The list of remaining dates for the 2025-26 school year is listed in the Winter issue of The Faith Flyer.
- There is a sign-up sheet for volunteers on the table in the narthex.
- There is an Amazon wish list with items needed for the Teachers' Closet. Scan this code or go to <https://bit.ly/46Pjb7l>



*Scan me*

### Have Your Paid Your Per Capita?

The per capita payment has portions sent to the presbytery, the synod, and the General Assembly to help pay for the operating expenses of those organizations.

**As of today**, we have received **\$4,565.21** toward our 2026 total amount due of **\$9,100**. The apportionment per member is **\$50** for 2026. You can pay your per capita online, or by check made payable to Faith Presbyterian Church.

## Two Weeks of Faith

This calendar is prepared a few days ahead of distribution.  
Please see the church [website](#) for the most up-to-date information.



**Key**  
BR Brick Room  
FH Fellowship Hall  
MR Music Room  
P Parlor  
PL Parking Lot  
S Sanctuary  
Z Zoom

### thisweek

**Sunday, February 8 *Souper Bowl of Caring***

10:00 a.m. - Worship Service  
11:00 a.m. - SMT (FH)

**Monday, February 9**

1:00 p.m. - Daybreak

**Tuesday, February 10**

9:30 a.m. - Growing in Grace Academy (3)  
3:00 p.m. - Sound Sprouts (2)  
7:00 p.m. - Session (BR)

**Wednesday, February 11**

8:00 a.m. - Rotary Foods Program  
9:30 a.m. - Women of Faith (BR)  
9:30 a.m. - Growing in Grace Academy (3)  
7:00 p.m. - EPNHN (P)

**Thursday, February 12**

9:30 a.m. - Growing in Grace Academy (3)  
10:00 a.m. - Conversations  
10:30 a.m. - Sound Sprouts (2)  
5:30 p.m. - Faithful Ringers (MR)  
7:00 p.m. - Faithful Harmonizers (S)  
7:00 p.m. - Narcotics Anonymous (FH)

**Friday, February 13- Office Closed**

**Saturday, February 14**

9:00 a.m. - Zumba (FH)  
2:00 p.m. - Sound Sprouts Recital (S & FH)

### nextweek

**Sunday, February 15 *Newsletter Deadline***

10:00 a.m. - Worship Service  
11:00 a.m. - Talent Show (FH)  
3:00 p.m. - Youth Group snow tubing @ Bear Creek

**Monday, February 16 *Presidents' Day Office Closed***

7:00 p.m. - Ministry to the Community (P)

**Tuesday, February 17**

9:30 a.m. - Growing in Grace Academy (3)  
3:00 p.m. - Sound Sprouts (2)

**Wednesday, February 18 *Ash Wednesday***

8:00 a.m. - Rotary Foods Program  
9:30 a.m. - Women of Faith (BR)  
9:30 a.m. - Growing in Grace Academy (3)  
3:30 p.m. - Teachers' Closet  
6:30 p.m. - Worship: Soup Supper (FH)

**Thursday, February 19**

9:30 a.m. - Growing in Grace Academy (3)  
10:30 a.m. - Sound Sprouts (2)  
7:00 p.m. - Narcotics Anonymous (FH)

**Friday, February 20- Office Closed**

**Saturday, February 21**

9:00 a.m. - Zumba (FH)  
10:00 a.m. - Quilters (FH)

### Snow Cancellation Policy



If the snow starts piling up and you're wondering whether we are holding our Sunday service, stay safe and check WFMZ StormCenter for the latest cancellation updates: [wfmz.com/weather/stormcenter/](http://wfmz.com/weather/stormcenter/)

**Daybreak –February 9  
Flyer deadline–February 15  
2026 Per Capita–\$50.00**

#### Are You Getting the Info You Need?

Faith Church has four email lists. Are you interested in being added to one or more of them? Please indicate your interest, add your email address, tear off this tab, and drop in the offering plate.

- |   |   |
|---|---|
| <input type="checkbox"/> Weekly Announcements | <input type="checkbox"/> Quarterly Newsletter |
| <input type="checkbox"/> Prayer Chain         | <input type="checkbox"/> Emergency Alerts     |

Name & email: \_\_\_\_\_  
\_\_\_\_\_



- Feb. 18..... Ash Wednesday
- Mar. 29..... Palm Sunday, Easter Egg Hunt
- Apr. 2..... Maundy Thursday
- Apr. 3..... Good Friday
- Apr. 5..... Easter
- Apr. 19..... Clean-Up Day